

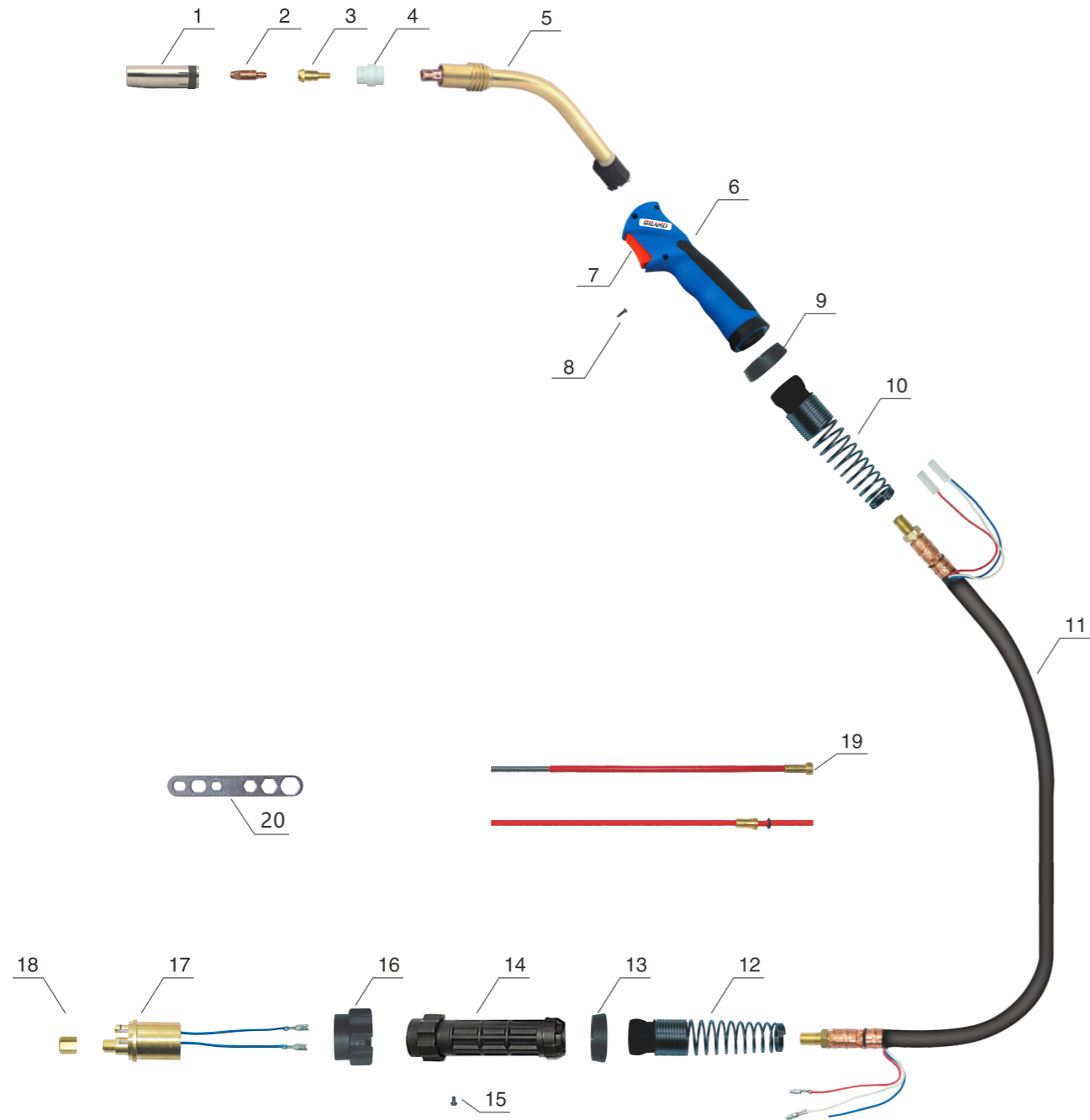
36KD

CE EN 60974-7

Cooling: Gas Cooled

Rated Current: 340Amp CO2 , 300Amp MIX

Wire Size: 0.8-1.6 Duty Cycle 60%



36KD



Main characteristics

- Ergonomic handle.
- Front and rear cable protection spring.
- Articulation to ease cable bending.
- The qualities of compactness and light weight with great reliability.
- Time-saving torch changeover due to the central adaptor system.

Material Number	Product Description	Smallest Packaging
1	36KD Welding Torch,4M,42mm ²	1
2	36KD Welding Torch,5M,42mm ²	1

No.	Product Description
1	Gas Nozzle Φ 16mm
2	Contact Tip Φ 1.2mm/M6x28mm
3	Contact Tip/Holder/M6x32mm
4	White Ceramic Gas Diffuser 36KD
5	Torch Head 36KD
6	MIG Handle/Blue
7	Trigger Red
8	Screw M3x10
9	Closing Ring/Grip Handle
10	Joint With Spring
11	Coaxial Cable 3m
12	Joint With Spring
13	Closing Ring/Grip Handle
14	Interface Protection
15	Screw M4x6
16	Gun Plug Nut/Black
17	Euro Central Adapter Body/Air Cooling
18	Liner Nut
19	Insulating Liner Φ 1.2-1.6mm/3m
20	Spanner for MIG

Note:The pictures of the accessories on the album are for reference only, the specific appearance details are subject to the actual product!