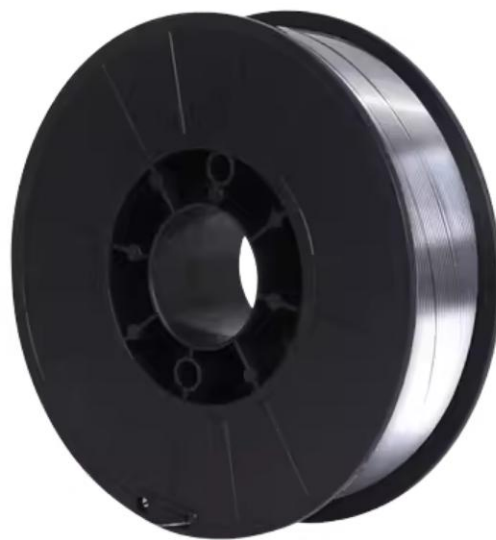


Used for welding 6xxx series aluminum alloys (such as 6061, 6063) and cast aluminum (such as A356), suitable for automotive parts, bicycle frames, building profiles, etc.

Recommended process: MIG welding (shielding gas: pure Ar)

■ Features:

- Good fluidity: High silicon (Si) content significantly improves the fluidity of the molten pool, suitable for thin plate welding
- Resistant to thermal cracking: Silicon eutectic reaction reduces thermal crack sensitivity, especially suitable for dissimilar aluminum welding
- Color matching: The color of the weld after anodizing is close to that of the 6xxx parent material



Chemical properties

Element	Si	Fe	Cu	Mn	Mg	Zn
Content	4.5-6.0	≤0.8	≤0.3	≤0.05	≤0.05	≤0.01

Material properties

Characteristics	Value/Description
Tensile strength	≥180 MPa
Yield strength	≥120 MPa
Elongation (gauge length 50mm)	≥10%
Impact toughness (-20°C)	25~35J @ 25°C
Electrical conductivity	35% IACS
Density	2.65 g/cm ³
Melting point	575~630°C