



GEARED TROLLEY

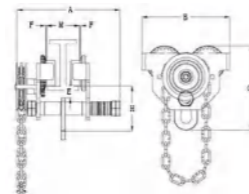
- High grade sealed ball bearings.
- With anti - drop plates.
- Galvanized hand chain.
- All structural parts made of high quality steel.
- Adjustable to any beam width, simply by adjusting the number of collars.
- For geared trolley, the standard operating length is 3 meter, other length is available upon request.



Model :GCL-B



ADJUSTABLE WIDTH
The wheels are made to fit any shape of a beam.



GEAR GUIDE MECHANISM
Gear guide mechanism in flanged load sheave and guide roller facilitate smooth movement.

TECHNICAL SPECIFICATION

Capacity (t)	I-BEAM(mm) M	Dimensions(mm)						Net weight (kg)	Carton Size (mm)
		A	B	C	E	H	F		
1T*5M	75-125mm	258	250	214	11	118	1, 5-3	13.2	305*160*175
2T*5M	100-150mm	284	270	227	14	125	1, 5-3	17.8	330*170*205
3T*5M	100-150mm	312	315	304	8	165	1, 5-3	26.1	390*200*235
5T*5M	125-175mm	365	358	334	21	183	1, 5-3	39.4	440*235*270
10T*5M	110-200mm	458	430	434	36	250	1, 5-3	75	590*310*400
20T*5M	110-300mm	595	518	524	45	324	1, 5-3	190	610*415*525

PLAIN TROLLEY

- All structural parts made of high quality steel.
- Adjustable to any beam width, simply by adjusting the number of collars.
- High grade sealed ball bearings.
- With anti - drop plates.
- Galvanized hand chain.



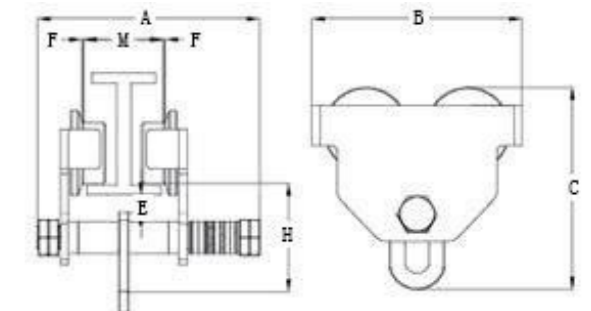
MOVEMENT MECHANISM
Trolley moves smoothly on cast iron flanged wheels equipped with sealed, lubed for life ball bearings.



ADJUSTABLE WIDTH
The wheels are made to fit any shape of a beam.



Model :GCT-B

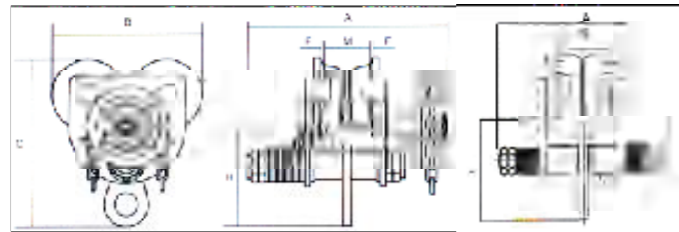


TECHNICAL SPECIFICATION

Capacity (t)	I-BEAM(mm)	Dimensions(mm)						Net weight (kg)	Carton Size (mm)
		A	B	C	E	H	F		
0.5T	75-125mm	198	204	188	23	113	1.5-3	6	295*75*185
1T	75-125mm	220	250	214	11	118	1.5-3	8	310*100*200
2T	100-150mm	243	270	227	14	125	1.5-3	11	340*130*210
3T	100-150mm	268	315	304	8	165	1.5-3	22	395*130*250
5T	125-175mm	305	358	334	21	183	1.5-3	30	440*150*300
10T	110-200mm	405	430	434	36	250	1.5-3	79	500*280*350



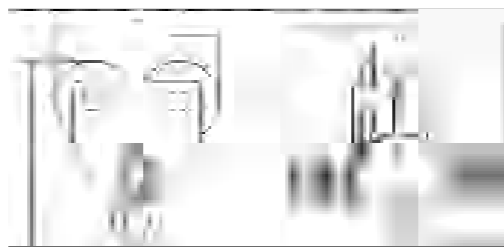
SERIES GEARED TROLLEY



Model :GCL-A

Model	Capacity(t)	Compatible Rail Size(mm)		Geared Trolley GCL-A Specification Dimensions(mm)								Min.rotation Radius(mm)	Net Weight (kg)	
		Width(W) Min.	Max.	Height(H) Min.	Max.	A	B	C	D	E	F			K
GCL-A10	1	75	125	125	250	206	231	120	Φ45	Φ80	27	117	1300	14.0
GCL-A20	2	100	150	150	400	241	271	155	Φ60	Φ100	33	119	1500	23.5
GCL-A30	3	100	150	180	400	261	311	185	Φ70	Φ113	47	134	2000	33.5
GCL-A50	5	125	175	250	450	294	351	220	Φ80	Φ125	53	134	2600	53.5
GCL-A100	10	150	175	250	450	294	721	165	-	Φ125	53	134	-	101.0

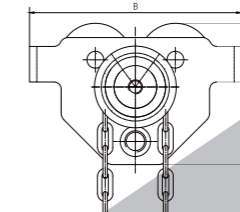
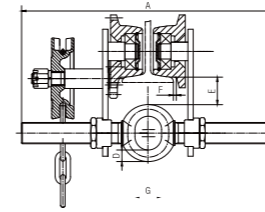
- Heavy duty construction with premium quality.
- Close headroom by design.
- Choose from either push or hand geared travel.
- Available to suit larger beam widths up to 310mm.



Model :GCT-A

Model	Capacity(t)	Compatible Rail Size(mm)		Plain Trolley GCT-A Specification Dimensions(mm)								Min.rotation Radius(mm)	Net Weight (kg)	
		Width(W) Min.	Max.	Height(H) Min.	Max.	A	B	C	D	E	F			K
GCT-A05	0.5	75	125	100	150	206	174	120	Φ45	Φ55	27	-	900	6.0
GCT-A10	1	75	125	125	250	206	231	120	Φ45	Φ80	27	-	1300	10.0
GCT-A20	2	100	150	150	400	241	271	155	Φ60	Φ100	33	-	1500	18.5
GCT-A30	3	100	150	180	400	261	311	185	Φ70	Φ113	47	-	2000	26.0
GCT-A50	5	125	175	250	450	294	351	220	Φ80	Φ125	53	-	2600	44.0
GCT-A100	10	150	175	250	450	291	721	165	-	Φ125	53	-	-	96.0

MANUAL GEAR TROLLEY

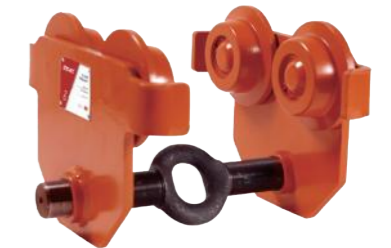
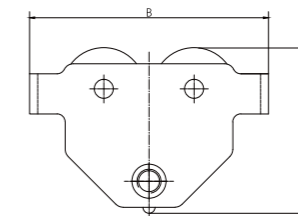
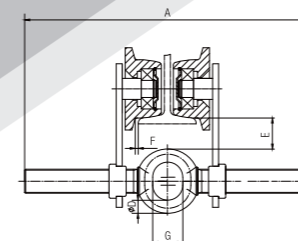


Model :GCL-C

MANUAL GEAR TROLLEY (MODEL: GCL-C)

Model	t	TGT-005	TGT-010	TGT-020	TGT-030	TGT-050	TGT-100*	TGT-200*	TGT-300*
Capacity	t	0.5	1	2	3	5	10	20	30
Proof Load	t	0.75	1.5	3	4.5	7.5	12.5	25	37.5
I-Beam Width	mm	50-220	58-220	66-220	74-220	90-220	125-203	136-203	144-250
Dimensions (mm)	A	352.5	353.5	362	406.5	434.5	487.5	523	570
	B	198	238	277	324	373	455	642	642
	C	158	183	208	249	296.5	490	622	622
	D	12.5	17	20	26	28	82	110	110
	E	40	31	31	31	40	36.5	54	50
	F	≈3	≈3	≈3	≈3	≈5	≈5	≈5	≈5
	G	25	29	36	46	52			
Net Weight	kg	8.5	12.5	17	28	45	93	247.5	254

MANUAL PUSH TROLLEY



Model :GCT-C

MANUAL PUSH TROLLEY (MODEL: GCT-C)

Model	t	TPT-005	TPT-010	TPT-020	TPT-030	TPT-050
Capacity	t	0.5	1	2	3	5
Proof Load	t	0.75	1.5	3	4.5	7.5
I-Beam Width	mm	50-220	58-220	66-220	74-220	90-220
Dimensions (mm)	A	285	300	300	328	354
	B	198	238	277	324	373
	C	158	183	208	249	296.5
	D	12.5	17	20	26	28
	E	40	31	31	31	40
	F	≈3	≈3	≈3	≈3	≈5
	G	25	29	36	46	52
Net Weight	kg	5	8.8	14	23	40